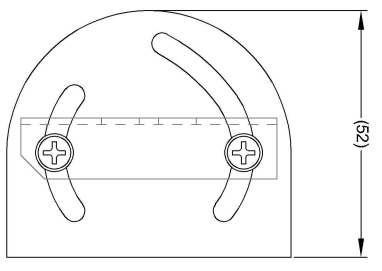
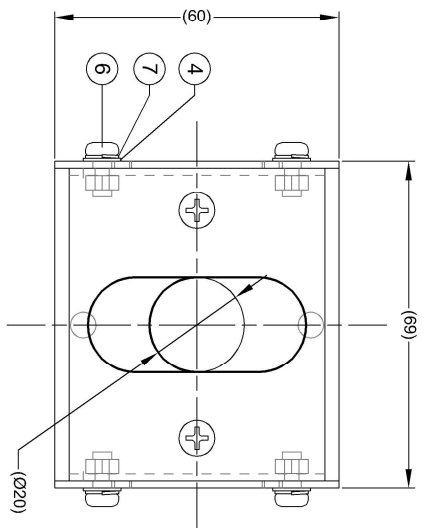
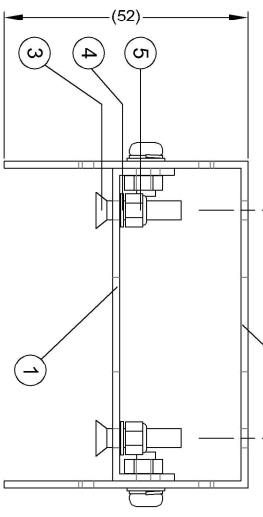
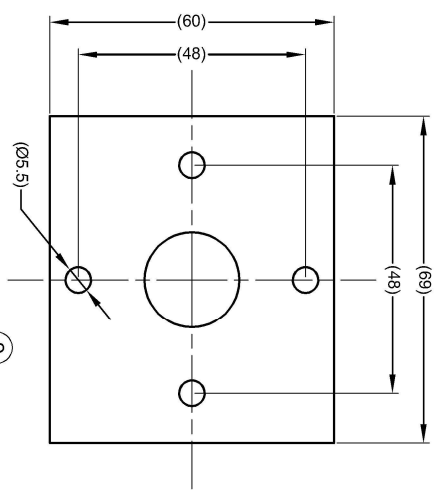


Revision Notes:			
RT -	Drawn:-	Checked:-	Approved:-
APAs -			Date: -

ITEM	PART NO	QTY	MODEL / DESCRIPTION
1	(4700A)	1	BN360-100C-BKT02A - BRACKET FRONT
2	(4713)	1	BN360-100C-BKT02B - BRACKET REAR
3	N/A	2	M4X18 STAINLESS STEEL CSK SCREW
4	N/A	6	M4 STAINLESS STEEL PLAIN WASHER
5	N/A	2	M4 STAINLESS STEEL NYLOC NUT
6	N/A	4	M4X10 STAINLESS STEEL PAN HEAD SCREW
7	N/A	4	M4 STAINLESS STEEL SPRING WASHER



- NOTES:
1. MATERIAL: 1.5MM (18SWG) 4003 STAINLESS STEEL.
 2. FINISH: NATURAL.
 3. SUPPLIED WITH FIXINGS LOOSELY FITTED.
 4. REFER TO COMPONENT DRAWINGS FOR COMPONENT DETAIL.
 5. SPRING WASHERS ARE RECOMMENDED WHEN MOUNTING THE CAMERA TO THE BRACKET TO ENSURE A SECURE FIT.

PROPRIETARY NOTICE
 THIS DESIGN AND TECHNICAL INFORMATION APPEARING ON THIS DRAWING IS THE PROPERTY OF BRIGADE ELECTRONICS, AND IS DISCLOSED IN CONFIDENCE. IT IS NOT TO BE COPIED, REPRODUCED, REVEALED TO OR EXPLOITED BY OTHERS, EITHER IN WHOLE OR IN PART WITHOUT THE EXPRESS WRITTEN CONSENT OF BRIGADE ELECTRONICS.

BRIGADE
 www.brigade-electronics.com

Assembly Pl Approval SCROXALL		Approved by L.PILLAY		Checked by SLAVER		Drawn by S.GOVENDER	
Angle of Projection		Scale N/A		Released 18/12/19		Assembly Ref -	
Third Angle		Status RELEASED		Part No 4714A		BN360-100C-BKT02 BE-004243-00-19	